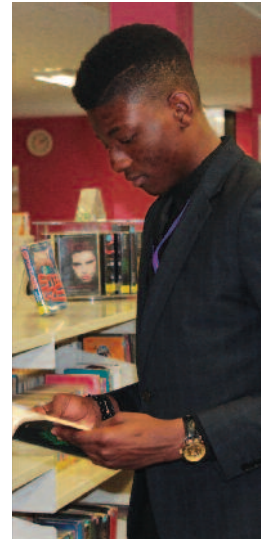




# Plumstead Manor Sixth Form

Success • Harmony • Excellence • Justice



# Prospectus







# Welcome to Sixth Form

The values of excellence and justice, success and harmony are at the heart of our community. We have high aspirations for academic scholarship, set alongside high expectations for behaviour and personal development, which embody our commitment to seeing all our students flourish and succeed.

Academic excellence is vital for our students so they are equipped with the knowledge and skills to maximise their potential, and realize their ambitions. At the same time we want them to develop into articulate and accomplished young people, who can confidently take their place in the world. These are the key ingredients of future personal and economic well-being, and they lay the foundations for a fulfilling life, and a fairer and more just society. We are proud to have a thriving Sixth Form, committed to educating confident young people who will go out into the world and change it for the better.

Our diverse Sixth Form offers a balance of academic and vocational qualifications, to suit the needs, interests and future careers of different young people. We provide clear pathways, with the chance to specialise in the Sciences and Maths, the Arts, Technology or Humanities. Students also have the chance to mix these different disciplines in a number of ways to create their own personalised programme.

We have the highest expectations for all our young people, and we want them to achieve the very best that they can. We want them all to be able to compete for the most competitive courses and the most sought after jobs. We want them to thrive and flourish, to excel in their chosen field and to move on to become confident and successful adults. We want them to have a lifelong love of learning that will last throughout their lives.

So a Plumstead Manor education is not simply about academic study. We offer a rich variety of extra activities that Sixth Formers can take advantage of via our sporting and arts facilities. There are lots of opportunities for students to take on leadership roles as well – one of the key attributes sought out by employers, colleges and universities.

Our Sixth Formers are an integral part of our school and make a lasting contribution. They lead a range of different fund raising activities, organise clubs, and help to run the School Council. This is why we have such success in securing the next step for our young people into higher education or the world of work – they are the leaders of tomorrow, and that shines out at interview.

We provide close support for young people who want to access apprenticeships and employment at 18. To support this we have a dedicated programme to help anyone applying for Medicine, Oxbridge and Russell Group universities. Additionally, our direct links with specific colleges and institutions can open up doors that some may feel are closed to them.

The best way for you to truly understand our community is to see us in action. We are open every Tuesday morning to visitors, so that you can get a good understanding of how we work. Please visit our website for more details, and follow the regular updates on our school Facebook page to find out what's been going on and for upcoming events.

I look forward to meeting you soon.

**Douglas Greig**  
Head Teacher





# Challenge and Creativity

A fundamental principle of learning at Plumstead Manor is our firm belief that young people can improve, and they will do this if they are placed in challenging situations, with sufficient support to spark their imagination and creativity. Our highly qualified staff are experts in their field who work closely with students to support them in their learning, challenging them to move beyond what they know and can do.

We welcome both young men and women into the Sixth Form and equip all students with the vital knowledge and understanding. We offer a combination of academic and vocational pathways to provide the prerequisite knowledge and relevant qualifications to secure success in the world of work and higher education.

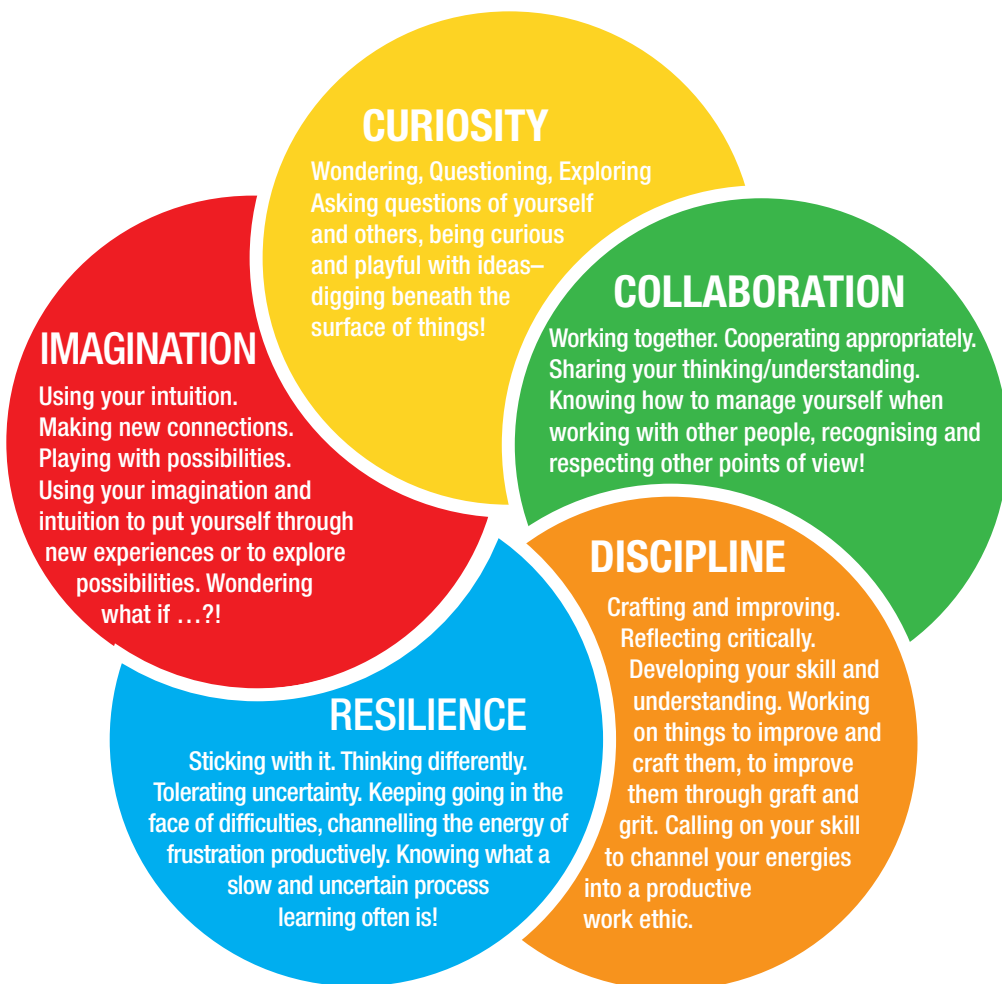
## The Plumstead Premium

We believe that students need a well-rounded education that combines high achievement with experiences that will help to prepare them for the next stage in their lives. In the competitive world of higher education, training and work, it has never been more important to ensure that our students have experiences that make them stand out. Therefore, we offer our students a broad range of enrichment opportunities to develop their skills and learning outside of the classroom, such as the chance to attend lecture days at universities and workshops organised for specific career paths. We also make sure that more able students are stretched and challenged through a tailored programme of activities, including trips to Russell Group universities, involvement in university mentoring and medical programmes, and partnerships that we have developed with Fitzwilliam College, Cambridge; Mansfield College, Oxford; Ravensbourne to name but a few.

**“My confidence has grown and I have become an effective communicator”**  
*(Year 13 student)*



To that end, we are developing an approach to learning which sees key qualities and attributes as central to future success. They result in higher attainment, better progress and ultimately better grades and outcomes in Year 11 and Year 13. These are the dispositions that bind together the knowledge and understanding central to future success, and they are shown in the diagram below.



We are building our curriculum planning around these qualities, and creating a praise and reward system which focuses on them. Teachers plan schemes of learning around these and embed them into lessons. They are vital because they help young people understand how they learn and so become more successful in the future.





# Raising Aspirations, Securing Success

Every student studies four courses in Year 12, along a variety of enrichment opportunities. In Year 13, students continue with three of their chosen courses. There are four routes through Sixth Form that students may choose from – which can be seen on the opposite page. We offer academic, vocational and medical pathways, as well as a combination of these pathways to best suit the needs of our students. Students can choose from a wide range of courses (see page 11).

High aspirations and excellence are at the heart of the Sixth Form at Plumstead Manor. We are a diverse community that prides itself on providing the highest quality education and experience, which meets the individual needs and aspirations of all our students.

Our broad and balanced curriculum ensures we provide access to Science, Technology, Engineering and Maths, alongside a depth of offer in the Performing Arts, Visual Arts and Humanities. We empower students to follow a tailored pathway and believe that young people are best served by a rich and broader experience. The education we provide is rounded and based on excellence, which gives students the platform to be stretched and challenged, to kindle their resilience and to spark their imagination and lifelong love of learning.

“Plumstead Manor has supported me and challenged me to constantly exceed my own expectations” *(Year 13 student)*

# Pathways to Success

## Routes through Sixth Form

We believe that every student should have the opportunity to tailor their pathway to meet their needs, which is why we offer a combination of routes through Sixth Form.

Here is an overview of the four typical pathways that students follow.







# Cultivating Harmony and Success

We want our students to be part of a safe and caring community, in which people of all backgrounds and abilities are respected and celebrated. Each student will be in a tutor group of 20 other students, each with their own Form Tutor. The role of the Form Tutor is a highly valued position within the school as we believe strong partnerships with parents/carers are fundamental to ensuring that students are able to develop their skills and achieve to the best of their ability.

We also have a well-developed Personal Development Curriculum that ensures our students are provided with the social and emotional tools to meet the challenges they will face in a diverse community, as well as the highest quality advice and guidance about their future pathways. We believe in nurturing young minds, and providing a high level of care to ensure that students are best prepared for learning and the future.

We are a harmonious community at Plumstead Manor and our Sixth Form is an integral part of the school. Sixth Form students regularly organise charity fundraising events, such as a coffee morning and dress down day to raise money for Macmillan Cancer Charity. Our Sixth Formers also volunteer as peer mentors for younger students, which they find very rewarding. We have a volunteering programme where students apply for positions of responsibility in departments or year groups across the school to build a closer sense of community and to encourage students to be active members of the school and local community.

Student Leadership is also central to Plumstead Manor Sixth Form. We want our students to be seen as positive role models for the rest of the school, so we encourage students to participate in the organisation of whole school events, as well as taking up positions as peer mentors for younger students. We have a Student Leadership team in Year 13 who lead and coordinate our School Council, this allows Year Councils in Years 7–13 to channel their thinking, raise questions and discuss issues. They have had significant impact in the last year with the coordination of Non-Uniform Days, Charitable fund raising, the installation of new furniture in the post 16 area, and helping us to develop our Praise and Reward programme.

## Personal Development

At Plumstead Manor School Sixth Form, we continue to promote students' spiritual, moral, social and cultural development (SMSC) through the Personal Development Programme. This includes independent Careers Information, Advice and Guidance – including UCAS applications, PSHE topics and Citizenship. We take pride in the quality of young people in this school, and through Personal Development we hope to help build positive relationships with each other and provide support in order for them to become positive contributors to society.





“Plumstead Manor has inspired my passion for Maths, which I have consequently decided to study at university”  
*(Head Boy 2014-2015)*

# Our Curriculum

## Business Studies

In the Business Department, we offer a range of courses to suit individual learning styles. Recent trips include a workshop at Credit Suisse exploring opportunities for women in Business; DAB Beachcroft for exploring career opportunities in the City of London; Bank of England Museum and City Walk and the Mini Factory Tour.

### 'A' Level Business Studies

The course is designed to engage students through topics and issues that are relevant in today's society, through key contemporary developments such as digital technology, business ethics and globalisation topics. Students will be assessed through two written examinations at the end of the two year course.

### BTEC National Business

With BTEC Nationals in Business, students have the flexibility to choose the right course to support their academic needs by offering a variety of assessment methods. Students may choose to study the Extended Certificate (equivalent to one 'A' Level) or the Diploma (equivalent to two 'A' Levels).

## English

Our aim is to equip students, regardless of background, with the skills and attributes to communicate powerfully, think critically, and flourish in a changing, growing world. We aim to foster and nourish a love of the transformative power of literature. Areas of study will include Shakespeare, poetry, prose and drama to develop your academic writing ability, bridging the gap between GCSE and University level study. Our course provides the first step in a lifelong journey of critical reading.

Students will benefit from: two enthusiastic specialist teachers; a range of active and engaging resources which support, stretch and challenge even the most able learners; the study of a variety of genres and text types; culturally enriching activities to broaden students' understanding and appreciation of our rich and diverse arts heritage; and the opportunity to make lasting links with partnership FE institutions such as Goldsmiths, Greenwich, and Gonville Caius, Cambridge.

## Extended Project

The Extended Project is a single piece of work, requiring a high degree of planning, preparation, research and autonomous working. The Extended Project gives students more control over their study than ever before. They have a free choice of project topic, so they can choose to explore a further aspect of a subject, or alternative subject, or choose a topic in which they have a personal interest. The finished project can be on almost any subject in any format. Previous projects have included written reports, performances, a piece of art, community projects, creation of CDs and DVDs, developing computer software.

This level of choice and flexibility means students are engaged and motivated, and gain valuable research and project management skills along the way.

## Financial Studies

Financial Studies has been designed to provide students with a challenging qualification covering the core disciplines of financial capability. Learners are encouraged to become responsible borrowers, sensible savers, and have an appreciation of the need for financial planning throughout their life. This is not an accountancy course, its purpose is to prepare students for further study through the development of the core skills of critical analysis and evaluation, synthesis, verbal communication (through classroom discussion) and written communication. This course is assessed by two examinations based around a pre-released case study.

## Humanities

We offer a range of Humanities subjects, including Geography, History, Religious Education, Psychology, Sociology, as well as a BTEC course in Health and Social Care. These subjects offer students the opportunity to develop their understanding of the world around them, which provides an important life skill for young people today. Students learn about the impact of events of the past and how human nature adapts. The Humanities subjects also help students to gain a better understanding of different viewpoints and ways of life around the world.



### **Modern Foreign Languages (French, German, Spanish)**

Through the target language you will study a range of issues relating to the countries concerned. The topic areas are: media, culture, health and family issues. You will also study in some depth the grammar and structure of the language you are learning. To do well you must be extremely committed to the subject. You will be assessed through a written exam and a speaking and listening examination where you are asked to do a role play followed by a discussion of an issue of your choice related to one of four topic areas.

### **ICT**

The ICT department delivers the OCR Level 3 Cambridge Technicals in IT, which encapsulate a wide range of units such as computer animation, project planning, advanced spreadsheets, multimedia creation, communication and employability, and information systems. It is an ideal foundation for students both entering the workplace and higher education, providing them with a theoretical background reinforced with practical skills that transfer into the modern workplace. The assessment is 100% coursework and completed over two years. Where possible, students are given the opportunity to visit organisations at the cutting edge of information technology to help contextualise learning and support their study. Recent trips have included training with Microsoft Systems at their London office, workshops at Adobe Systems UK headquarters, along with visits to 12foot6 (Award winning animators), Bloomberg and Ustwo (Mobile application development).

### **Media Studies**

Media is the language of the 21st Century. At Plumstead Manor Sixth Form, we offer a relevant and coherent curriculum that seeks to connect the dots between our students' existing relationship with technology and the study of new media. Students also learn to communicate visually and develop technical fluency in new and diverse software. As technology and new media is continually growing, we aim to equip our students with the critical literacy and technical know-how to evolve with the changing landscape of media. Students will benefit from: two specialist teachers to support them both technically and academically; state of the art equipment in our new media suite; practical and engaging activities to excite and enthuse budding media producers; and relevant trips and visits to highly regarded industries and institution such as Universal Studios, the BFI and Ravensbourne College.



# Our Curriculum

## Maths

At Plumstead Manor you will study core modules C1–C4. This will concentrate around techniques used to solve mathematical problems, such as solving equations, manipulating algebra, drawing graphs and understanding vectors. Within the Statistics units S1 and S2 you will cover the elementary ideas of extracting information from data; an essential requirement if you have any ambition to understand properly what you read in newspapers or use efficiently the information available on the Internet. Statistics is also an essential ingredient in the advanced study of financial systems and Economics.

Further Maths is also an option at AS level and A2, this is designed to stretch and interest the more able mathematicians. It counts as an additional subject for university entrance and is studied alongside Mathematics. Further Maths incorporates another six modules including Decision Maths, Mechanics and Further Pure Maths. The pace of teaching is greater for those studying Further Maths, and you will also be expected to do more work independently and need to have a passion for mathematics and determination to succeed.

## Science

The aim of the Science department is to promote excellence in Science by developing scientists with high aspirations who enjoy being challenged. We actively promote opportunities for all scientists to further their scientific knowledge through enquiry, investigations, and discussions whilst developing their practical skills and their ability to apply their knowledge to the world around them.

We have links with both the Royal Society for Chemistry and the Institute of Physics as well as the Royal Observatory, the University of Greenwich and Barts School of Medicine and Dentistry.

The Department offers a full range of scientific qualifications: AS and A level qualifications in Biology, Chemistry and Physics as well as BTEC Level 3 Diploma in Applied Science. As well as exciting and innovative lessons in all subjects we offer a range of enrichment activities including visits to the Royal Society of Chemistry Summer Science exhibition, the Wallace Collection and Masterclasses for all A level sciences at Greenwich University. Students studying the Diploma in Applied Science have a two week work experience in a science based industry or service.

The department also has a well developed support programme for all science subjects. We offer regular after school enrichment lessons as well as weekly drop-in sessions to cater for individual students' needs.

## Visual and Performing Arts

There are many opportunities within Art, Dance, Music and Drama. All the courses enable students to access and celebrate their creativity. All departments have strong links with institutions in their field and ensure students have a range of enrichment opportunities available to complement their chosen study. Many collaborative events within the Visual and Performing Arts take place throughout the year where students have the opportunity to support each other and celebrate the achievements, from our Dance showcase 'Outburst' to our 'Art Exhibitions'. From our Musical production and A-level performances to our 'winter concert', students are encouraged to get involved in many different facets within the faculty. Here are some of the department specifics:

- Music students studying the BTEC Level 3 Subsidiary Diploma in Music will have individual instrumental lessons with their main instrument. They will also perform as a soloist, and in an ensemble or band
- Dance students have the opportunity to participate in Rise Dance Company as well as Street/Urban Dance projects led by a current Dance professional called Simeon. As part of the post-16 Dance courses and in order to create links with higher education dance institutions, the Dancers have visited the Laban Dance Centre
- The Drama department has strong links with many West-End theatres and students frequently take advantage of this. Our current A Level cohort is working in conjunction with the Donmar Warehouse on the 'tomorrow project' which requires students to devise their own piece of work which is ultimately performed on the Donmar stage
- The Art students will experiment with a range of materials and techniques. Students are given opportunities to enter work for national competitions, not only to exhibit and display their working outcomes at the end of year exhibition, but also in external spaces, with local partnerships that we have within the community.



### A-LEVEL PATHWAY



- Biology
- Business
- Chemistry
- English
- EPQ
- French\*\*\*
- Further Maths
- Geography
- German\*\*\*
- History
- Maths
- Physics
- Psychology
- Religious Studies
- Sociology
- Spanish



### VOCATIONAL PATHWAY



- ICT Level 3 OCR (Equiv 1 A-Level)
- BTEC Science Diploma\*\*
- IFS Diploma in Financial Studies (Equiv 1 A-Level)
- BTEC Business Studies NEC\*
- BTEC Business Studies Diploma\*\*
- BTEC Health and Social Care NEC\*
- BTEC Health and Social Care Diploma\*\*



### CREATIVE ARTS PATHWAY



- Drama (A-Level)
- Photography (A-Level)
- Textiles (A-Level)
- Media Studies (A-Level)
- Art (A-Level)
- BTEC Art NEC\*
- BTEC Performing Arts NEC\* (Dance Specialism/Drama Specialism)
- BTEC Music NEC\*



\*\*\*Subject to numbers \*National Extended Certificate equivalent to 1 A Level \*\*Diploma equivalent to 2 A Levels



# Beyond the Curriculum

The Sixth Form have an enriching experience comprising of learning inside and outside of the classroom, which develops their self-awareness and self-potential to understand how to achieve far reaching goals.

Students have the opportunity to participate in a range of extra-curricular experiences including: Student Leadership/Student Voice; Duke of Edinburgh Award; Extended Project Qualification; Use of the Gymnasium and Fitness classes; Debating classes; Cookery classes; Summer Schools; Trips and Visits; Competitions; Performing Arts.

We take students on trips to different universities and further education providers, to give them an insight into the world of further education. This includes trips to Ravensbourne, Greenwich University, Oxford, Cambridge, UCL and King's College to name a few.

## Progression Support

In order to support students in achieving their goals and in working towards achieving their full potential, there are a number of additional support programmes available for students.

- Taster Week in July for all potential Year 12 students
- An Induction programme in September for all Year 12 students
- Literacy and essay writing support run by subject areas
- A Literacy and Communication Skills programme
- Support with the university or apprenticeship application process, including interview practice
- Opportunities to visit universities, participate in university programmes (such as K+ and medical outreach programmes)
- Mentoring programme with Lloyds
- Sports activities and Duke of Edinburgh's Award Scheme
- Independent and impartial careers guidance
- Academic mentoring
- Visits arranged by departments to support learning, such as theatre trips, museum visits, lecture days.











# Facilities

Our purpose built Sixth Form Centre completed in 2013 is a state-of-the-art learning environment. Modern, flexible and technology-rich, it engenders a sense of pride, place and ownership for everyone within our sixth form community.

The Sixth Form area has a cyber café, large open-plan study areas complete with workstations, table tennis tables and its own dining servery area, the perfect base for our older students, giving Plumstead Manor Sixth Formers everything they need inside a stunning space.

Sixth formers have access to the full sized dance studio, equipped with a ballet barre, sprung wooden floor and full length mirrors. The Drama department also benefits from a suite of studios and rehearsal rooms along with two fully equipped theatre spaces. The PE department makes full use of our four badminton court sized sports hall and two multi-purpose gyms, as well as a well-equipped fitness suite, which Sixth Form students are able to use as part of our enrichment programme. Our Media Studies students have sole access to a Mac media editing suite to support their studies, while Music students enjoy the benefits of our own recording studio.



“I intend to continue my journey of learning into Year 13 and beyond” *(Year 12 student)*



# Destinations

Sixth Form is a transitional stage between compulsory education and life in employment, higher education or training. Equality and Justice are our mission at Plumstead Manor. We have the highest aspirations for all our students, so that irrespective of their background and ability, we empower them to flourish in a dynamic and unequal world.

We have a personalised career enhancement programme specifically designed to prepare students for their future pathways whether that may be going to university, taking up an apprenticeship or employment.

Students have a range of experiences throughout their time, including visits to: career fairs, a range of industry workplaces, universities, subject enhancement workshops. We organise visits to school by successful industry experts in a range of fields, as well as interview and CV writing workshops.

In addition, Year 12 students are taught how to write a personal statement, how to research courses, learn about university finance, student life and also to understand the process of applying to university and other routes to employment, such as apprenticeships. We have outside speakers from Surrey University admissions and student finance, and visit a UCAS convention held at Goldsmiths University with over 1200 universities present. Over 80% of our students progress to university to study a wide range of courses.

Many of our students are guided to apply for and take part in higher education access programmes where they receive personalised mentoring, as well as taking part in university subject days. Some include:

- K+ programme at King's College London
- Oxford Shadowing Scheme
- Target Medicine University College London
- Teach First Futures

The partnerships we have created give our Sixth Form students meaningful opportunities and access to facilities, contacts and experiences to ensure that our students leave Plumstead Manor Sixth Form on a pathway to success. These include links with top universities, including King's College London, Cambridge University, London Southbank University and Greenwich University. We also have links with apprenticeship programmes, such as Step Forward (Challenge) and businesses, including Lloyds and Credit Suisse.



# How to apply to Plumstead Manor Sixth Form

Once you have visited us on our Open Evening all you need to do is complete the application form, which can be found on our website [www.plumsteadmanor.com/Sixth-Form](http://www.plumsteadmanor.com/Sixth-Form).

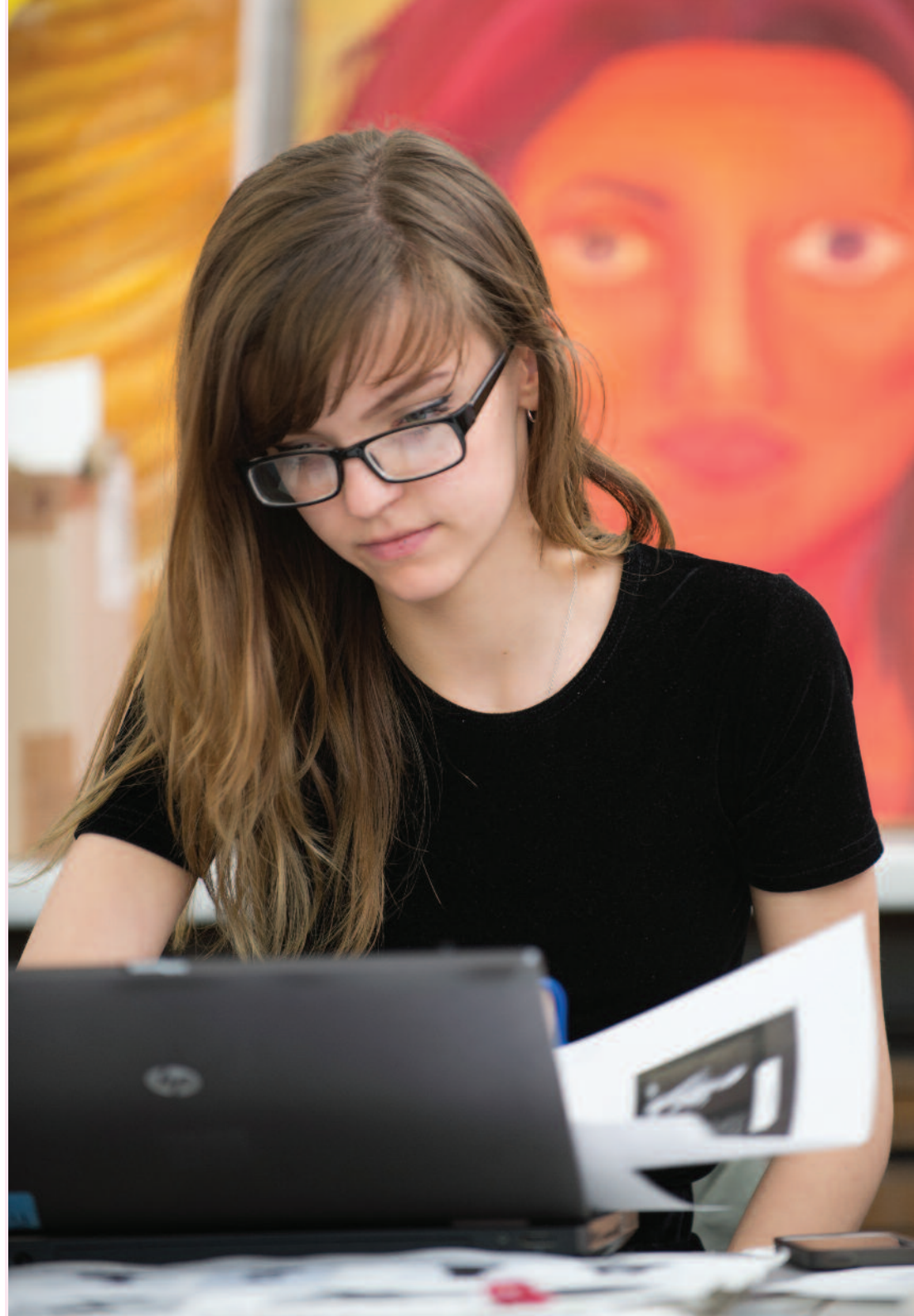
## What happens next?

1. We will invite you to attend an interview with a member of the Sixth Form Team
2. Following a successful interview, we will offer you a conditional place on your chosen courses, based on the grades you are predicted to achieve at GCSE
3. You will need to return the acceptance slip attached to the offer letter as soon as possible
4. On GCSE results day, you will need to come in and show us your results to confirm your place at Plumstead Manor Sixth Form.

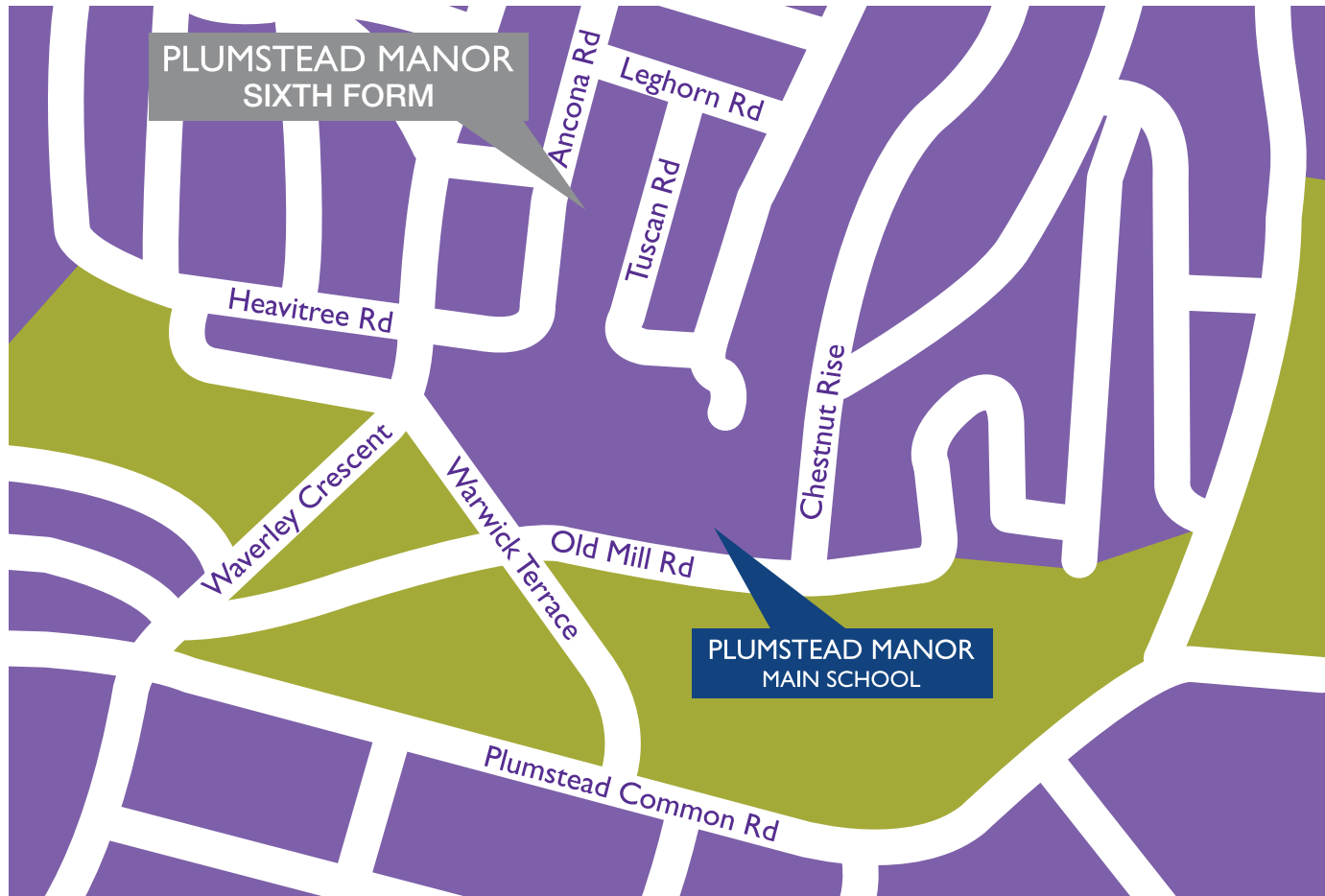
If you would like to visit the school during a normal working day, please contact us via email [sixthform.info@plumsteadmanor.com](mailto:sixthform.info@plumsteadmanor.com) or telephone 0203 260 3013 and we will be happy to arrange a tour of the school.

Our general entry requirements are 5 good passes at GCSE (A\* - C grades) including a Band 4 or above in Maths and English. Students who do not achieve a Band 4 or above in either GCSE Maths or English will be considered on an individual basis and will be required to re-take the course in Year 12. Facilitating subjects are English Literature, Maths, Sciences, Geography, History and Modern or Classical Languages.

We recommend that students should achieve a B grade at GCSE in order to continue in that subject in the sixth form.



Bus routes: 51, 53, 625, 658, 291  
Nearest Train Station: Plumstead (10 minute walk)



**PLUMSTEAD MANOR SIXTH FORM**  
Ancona Road, London SE18 1AB  
Tel: 020 3260 3103

For admissions complete the online application form on our website or contact the Sixth Form team using [sixthform.info@plumsteadmanor.com](mailto:sixthform.info@plumsteadmanor.com)

[www.plumsteadmanor.com](http://www.plumsteadmanor.com)